

LIST OF SURFACE TREATMENT:

- A

WOODEN TWO WING EUROWINDOW IV78, DOUBLE GLAZING,  $U_w=1,1\text{ W/(m}^2\cdot\text{K)}$
- B

WOODEN FACADE, THERMWOOD
- C

WOODEN ONE WING EUROWINDOW IV78, DOUBLE GLAZING,  $U_w=1,1\text{ W/(m}^2\cdot\text{K)}$
- D

EARTH ANCHOR KRINNER KSF U 66x865-91
- E

TIN SMITH WORK FROM GALVANIZED METAL, BLACK
- F

WOODEN ENTRANCE DOOR EURO 4-88,  $U_d=0,82\text{ W/(m}^2\cdot\text{K)}$
- G

TIMBER STRUCTURE OF TERRACE, SPRUCE, PAINTED WITH PROTECTIVE COLOUR
- H

TIMBER RAILING, SPRUCE, PAINTED WITH PROTECTIVE COLOUR
- CH

METAL SHEET COVERING Lindab SRP Click , WINE RED
- L

GUTTER SYSTEM LINDAB RAINLINE - COATED METAL, BLACK
- J

METAL SHEET COVERING Lindab SRP Click, WINE RED
- K

CHIMNEY HELUZ KLASIK - HAK, WITH HALF VENTILATION SHAFT, 400x600mm
- L

FIXED WINDOW COMBINED WITH TWO WING EUROWINDOW
- M

WOODEN EURO WINDOW 3000x1500 mm,DOUBLE GLAZING,  $U_w=1,1\text{ W/(m}^2\cdot\text{K)}$
- N

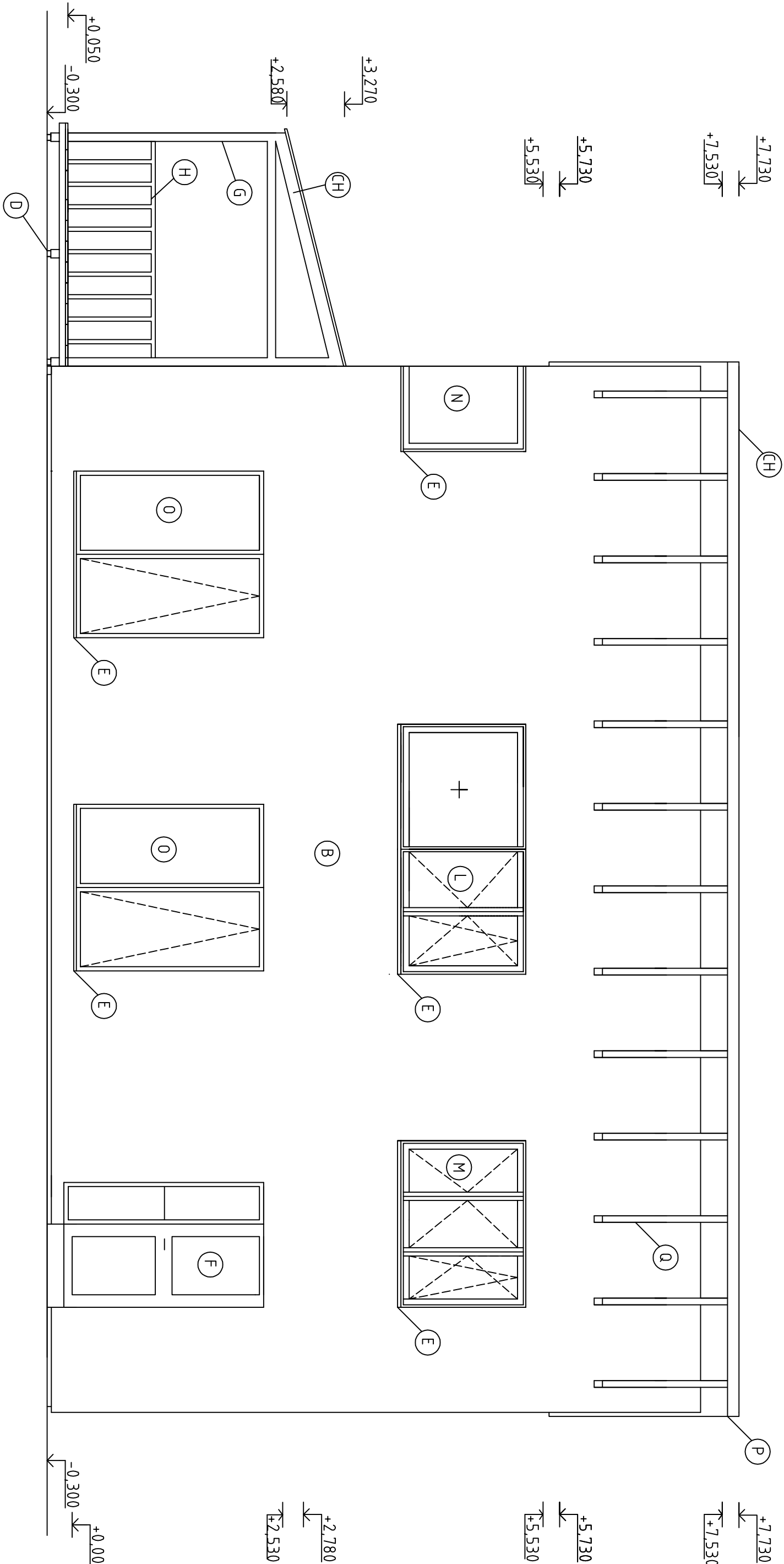
CORNER WOODEN WINDOW,DOUBLE GLAZING,  $U_w=1,1\text{ W/(m}^2\cdot\text{K)}$
- O

WOODEN BALCONY DOORS, DOUBLE GLAZING,  $U_w=1,1\text{ W/(m}^2\cdot\text{K)}$
- P

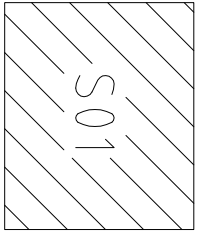
NPSRP METAL FINISHING OF SHED ROOF, LINDAB
- Q

TRUSS SYSTEM, COVERED WITH PROTECTIVE COLOUR
- S


METAL SHEET FLASHING OF CHIMNEY, WINE RED, LINDAB



c)				
b)				
q)				
NO.	REVISION/ISSUE	CHANGE MADE BY	SIGNATURE	DATE



0.000 = 263,300 mas.l.b.l. / COORDINATION SYSTEM S - JTSK

TYPE OF WORK	BACHELOR THESIS			 <div>UNIVERSITY OF JYVÄSKYLÄ TECHNICAL FACULTY OF CIVIL ENGINEERING DEPARTMENT OF CIVIL ENGINEERING</div>	
AUTHOR	Viktor Gach				
SUPERVISOR	Ing. František Vaňkay Ph.D.				
BUILDER	Jakub Smolný, Rašínova 92, 500 11, Hradec Králové				
BUILDING PLOT	cadastral area: Vysoká nad Labem, plot 244/3				
NAME OF THE CONSTRUCTION	FAMILY RESIDENCE				
BUILDING	SO 01			FORMAT	4 A4
PART	D.1.1 ARCHITECTURAL - CONSTRUCTIONAL SOLUTION			DATE	05/2015
TYPE OF WORK	SOUTH VIEW			DEGREE PD SCALE	DEC 1:50
				NO. DRAWING	D.1.108